

# Elixo 2000 230 V RTS

Motorization for sliding gates

UP TO 20 M | 2,000 KG

Collective housing | Intensive use



Oil bath gearbox permanently lubricated and perfectly cooled.

## Robust & unalterable designed for heavy gates with intensive use

### Robust for an intensive use

- > Very intensive use, the motor can work permanently and it has been tested for 180,000 cycles on a 10 m and 2,000 kg gate.
- > The oil bath gearbox minimizes component wear, so they are permanently lubricated and perfectly cooled.

### Protect the installation

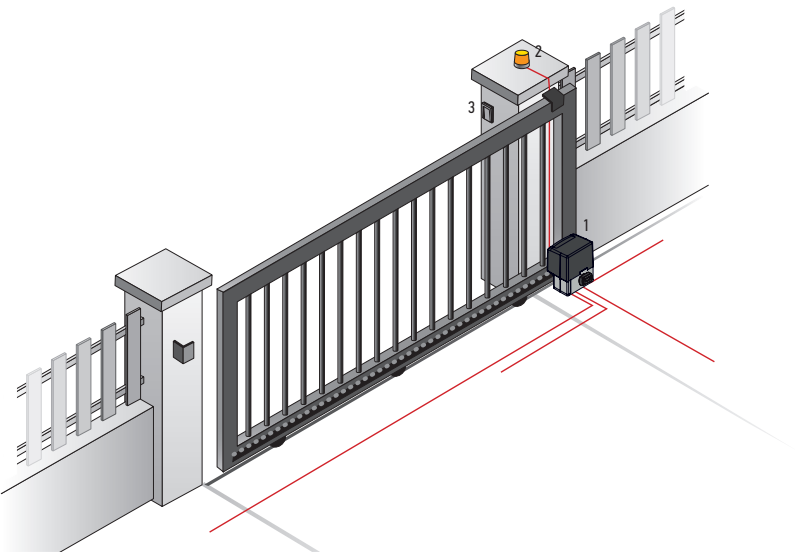
- > Motors are protected by individual keys, for locking or unlocking.
- > Encoder technology: electronically controlled movement, safe and constant, to ensure a maximum of tranquility and security to gate users.
- > Anticrush security: guaranteed by the electronic system that detects the presence of obstacles.
- > The irreversibility of the motor guarantees a perfect locking of the gate in closed position thus avoiding any possibility of intrusion.

### Adjustable settings

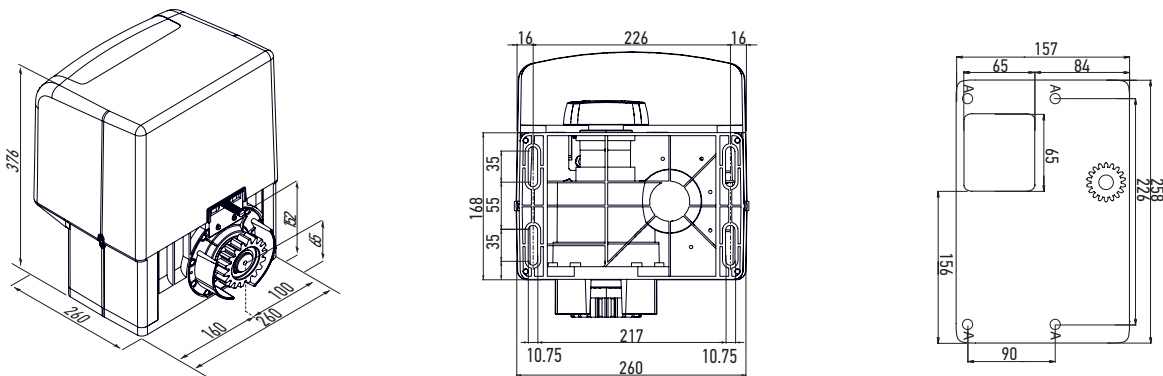
- > The motor torque and the soft stop functions are automatically set during the autoset parameter to suit the weight of the gate, to ensure efficiency and preserve the gate. These parameters can be adjusted after the autoset adapt to each use.
- > Adjustable partial opening position for pedestrians and cyclists.
- > Automatic closure, operating modes possible to meet all your needs.
- > Possible to adjust the energy during the slowdown phase (brake parameter).

### Standard installation

1. Elixo 2000 230 V RTS
2. Orange light
3. Keyswitch / Video door phone



### General overall size



### Technical characteristics

Mains power supply	220-230 Vac 50/60 Hz	Lubrication	Oil bath
Power consumption	750 W	Manual operation	Release using individual key
Maximum torque	40 Nm	Climatic operating conditions	- 20°C/+ 55°C - IP 24
Speed	9 m/min	Noise level	< 70 dBA
Maximum gate leaf weight	2,000 kg	Radio frequency	433.42 MHz
Maximum gate leaf length	20 m	Number of storable channels	32

### Special accessories



**Radio keypad metal RTS**  
More information on page 152

Ref. 1841111 (France)  
Ref. 1841116 (International)



**Video door phones**  
More information on pages 160 to 173

Ref. 1841111 (France)  
Ref. 1841116 (International)



**2 meter steel Rack 22 mm x 22 mm**




Ref. 9020919



**Radio safety edge kit rubber h 90**  
More information on page 72

Ref. 9019611

## Packs

				Minimum order quantity
<b>Elixo 2000 230 V RTS motor</b>				
<b>Keygo RTS</b>				
Ref. 1841064				
<b>Foundation plate</b>				
<b>Standard pack RTS</b>	• x1	• x2	• x1	1
Ref. 1216595				
<b>Palett pack RTS</b>	• x1	• x2	• x1	8
Ref. 1216600				

